



HEBEI NANFENG AUTOMOBILE EQUIPMENT (GROUP) CO.,LTD  
BEIJING GOLDEN NANFENG INTERNATIONAL TRADING CO., LTD

# Company Profiles

Hebei Nanfeng Automobile Equipment (Group) Co.,Ltd is a group company with 6 factories, that specially produce heaters and heater parts for more than 30 years. We are the leading parking heater manufacturers in China, and currently the only designated parking heater suppliers for Chinese military vehicle.

Our factory' s production units are equipped with high tech machineries, strict quality control testing devices and a team of professional technicians and engineers endorsing the quality and authenticity of our products.

In 2006, our company has passed ISO/TS16949:2002 quality management system certification. We also bagged the CE certificate and Emark certificate making us amongst the only few companies in the world acquiring such high level certifications. Currently being the largest stakeholders in China, we hold a domestic market share of 40% and then we export them around the globe particularly in Asia, Europe and Americas.

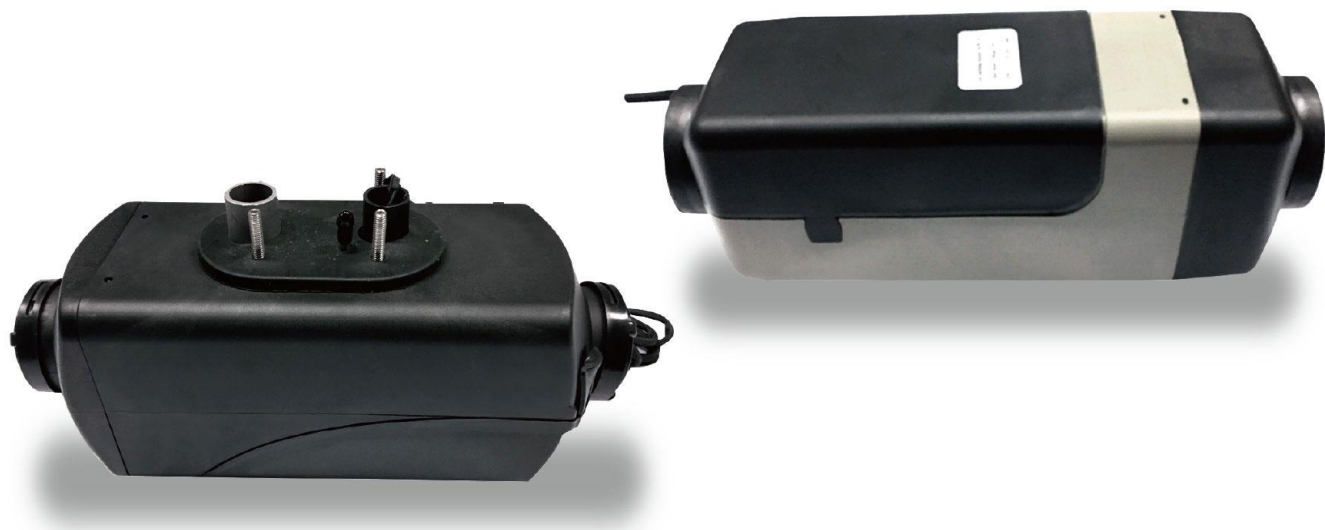
Meeting the standards and demands of our customers have always been our top priority. It always encourages our experts to continuously brain storm, innovate, design and manufacture new products, impeccably suitable for the Chinese market and our customers from every nook of the world.





# 空气驻车加热器

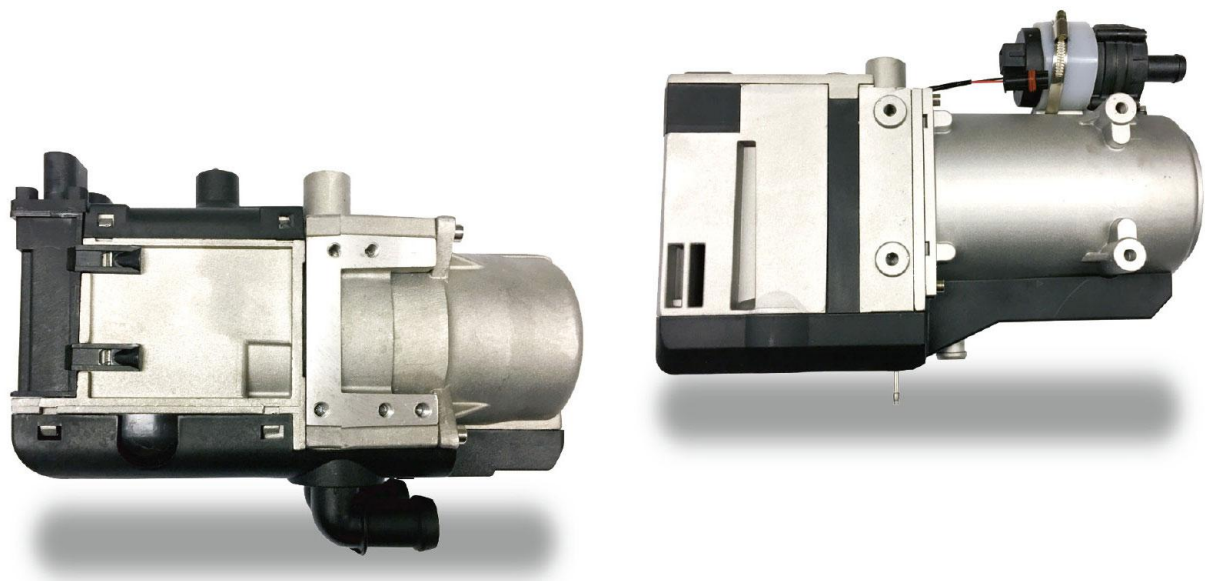
Air parking heater



Technical specification			
Power ( W )	2000	3000	5000
Heating medium	Air	Air	Air
Fuel	Diesel	Diesel	Diesel
Fuel consumption ( l/h )	0.28~0.1	0.18~0.36	0.5
Rated voltage ( V )	12/24	12/24	12/24
Low limit of under voltage protection ( V )	10.5/21.6	10.5/21.6	10.5/21.6
Upper limit of over voltage protection ( V )	15.5/30	15.5/30	15.5/30
Rated consumption ( W )	14~29	14~29	14~29
Working temperature ( °C )	-40~+70	-40~+70	-40~+70
Weight ( KG )	2.8	2.8	4.5
Size ( mm )	305 × 115 × 122	310 × 115 × 122	376 × 140 × 150
Suitable to Vehicles	micro vehicles,minivans,sedans,trucks,passenger cars,station transport wagons,engineering vehicles,agricultural transportation vehicles		

# 水暖驻车加热器

Liquid parking heater



Technical specification				
Model	YJH-Q5	YJH-Q9	YJH-Q12	YJH-Q16
Rated heat flux ( kw )	2.5-4.3	9	12	16
Fuel	Gosdine/Diesel	Diesel	Diesel	Diesel
Fuel consumption ( kg/h )	0.21-0.69	1.0	1.5	2.8
Rated voltage ( V )	12/24	12/24	12/24	12/24
Working voltage ( V )	10.2-16	18-32	18-32	18-32
Power consumption ( W )	10-37	55	132	<78
Weight ( kg )	2.7	6.2	8.5	5.87 ± 0.5
Size ( mm )	222 × 90 × 174	311 × 138 × 174		360 × 125 × 180
Suitable to Vehicles	Cars,Cold starting and compartment heating of commercial vehicles	Car, SUV, small passenger cars and other types of vehicles and construction machinery		Agricultural vehicles, vans, large passenger cars, large trucks, water circulation system of engineering vehicle and Trailer

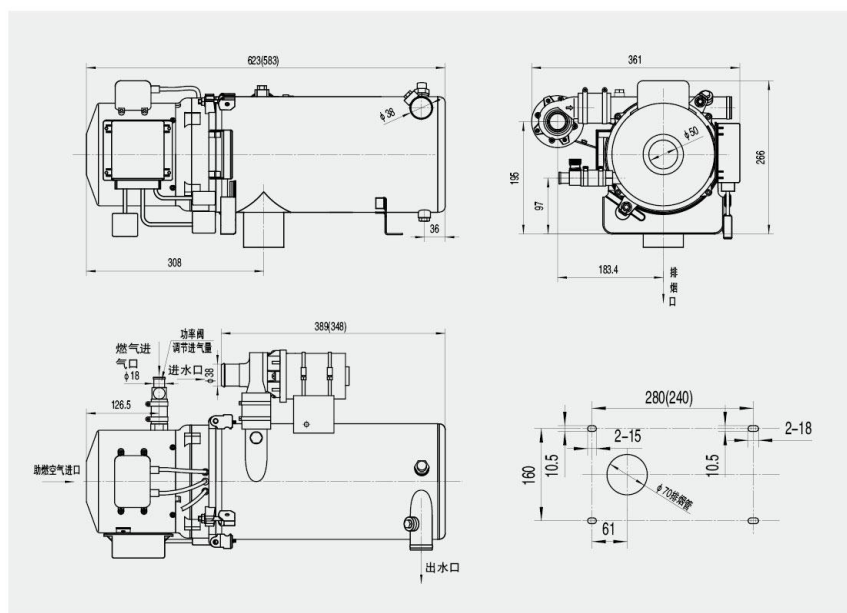


# YJT 系列液体燃气加热器

## YJT Gas Heater



- YJT系列燃气液体加热器采用天然气 (CNG 或LNG) 为燃料，废气排放接近零污染；全自动程序控制，工作安全可靠；专利保护，国内首创。
- 温度传感器、超温保险、负压供气减压器、燃气泄露报警器四重保护，安全可靠。
- 点火传感器采用离子探针传感器，判断准确、可靠。
- 12种故障停机报警保护功能，通过指示灯闪码表示主机不同故障，使安全性更高，维修更方便。
- 可广泛为天然气公交车、客运车、卡车的发动机低温启动和车厢供暖提供热源。



- The YJT series gas heater is fueled by natural or liquefied gas, CNG or LNG, and has near-zero exhaust gas. Features automatic program control to ensure safe and reliable operation. Patented product, originated in China.
- The YJT series gas heater has multiple protective features, which includes a temperature sensor, overtemperature protection, decompressor and gas leakage detector. These devices ensure the heater's safety and reliability.
- Its Ion probe sensor acts as ignition sensor, which is accurately calibrated.
- The YJT series gas heater has 12 types of index signals, which can indicate heater faults. This makes the YJT series liquid heater safer and more convenient to maintain.
- Suitable for preheating engine with a cold start and heating the passenger compartment in various types of gas powered buses, passenger buses and trucks.

参数 Parameter 型号Type	项目 Item	热流量 Thermal flow (kW)	耗气量 Fuel consumption (nm <sup>3</sup> /h)	工作电压 Voltage (V)	系统额定功耗 Rated power (W)	质量 Weight (kg)	外形尺寸 Overall size (mm)			主要用途 Main application
							L	W	H	
YJT-Q20/2X		20	2.6	DC 24	150	22	583	361	266	发动机低温启动、车厢采暖 Engine cold starting and compartment heating
YJT-Q302X		30	3.8	DC 24	150	24	623	361	266	

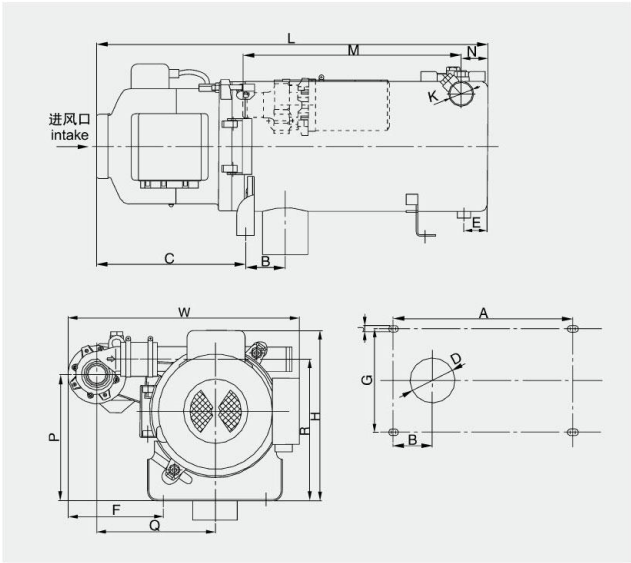
# YJP 系列液体加热器

## YJP Water Heater



- Applying fuel spray atomization, the burn efficiency is high and the exhaust fulfills European environmental protection standards.
- High-voltage arc ignition, ignition current is only 1.5 A, and ignition time is less than 10 seconds
- Due to the fact that key elements are imported in the original package, reliability is high and service life is long.
- Welded by the most advanced welding robot, each heat exchanger has a good appearance and high coherence.
- Applying concise, safe and fully automatic program control; and highly precise water temperature sensor and over-temp protection are used to double safety protection.
- Suitable for preheating engine at cold start, heating the passenger compartment and defrosting the windshield in various types of passenger buses, trucks, construction vehicles and military vehicles

- 燃油喷射雾化，燃烧效率高，排放符合欧洲环保要求。
- 高压电弧点火，点火电流仅有1.5A；点火时间小于10秒。
- 可靠性高，寿命长，关键零部件为原装国外进口。
- 换热器采用先进的机器人焊接，外形美观，一致性好。
- 使用简单、安全，全自动程序控制，采用高精度的水温传感器和超温保险，双重安全保护。
- 可普遍为中、高档客车、货车、工程机械、军用车辆的发动机低温起动、车室内取暖、挡风玻璃除霜提供热源。



型 号 Type	热流量 Thermal Flow (kW)	耗油量 Oil wear (kg/h)	电 压 Voltage (V)	功 率 Power (W)	介质循环方式 Circulation method	质 量 Weight (kg)	主要用途 Main Application
YJP-Q16.3	16.3	1.87	DC 24/12	170	水泵强制循环 Coolant pump	22	发动机低温起动、客车取暖 Engine cold start & heating
YJP-Q20	20	2.37					
YJP-Q25	25	2.67					
YJP-Q30	30	2.97				24	
YJP-Q35	35	3.31					

型 号 Type	A	B	C	D	E	F	G	J	K	M	N	P	Q	R	外形尺寸 Overall size		
															L	W	H
YJP-Q16.3	240	61	234	Ø70	36	150	160	10.5	Ø38	335	41.5	195	180	220	570	360	265
YJP-Q20																	
YJP-Q25																	
YJP-Q30																	
YJP-Q35																	
	280														610		



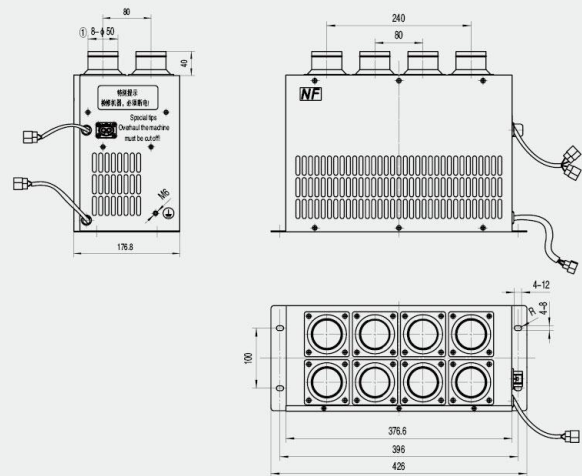
# DCS系列高压电除霜器

## DCS series high voltage electric

- 高压电除霜器，用于纯电动车挡风玻璃除霜。
- 应用PTC发热组件，安全性更高。
- 发热量高，最高可达6KW。
- 专用出风温度超温保险装置，控制出风温度在安全范围内，保证使用安全可靠。
- High voltage defnster for electricd vehicle.
- Safer product with the application of PTC heating components.
- High heating power up to 6KW.
- Special outlet air temperature sensor to control the wind temperature in the safe range, to ensure safe and reliable use.

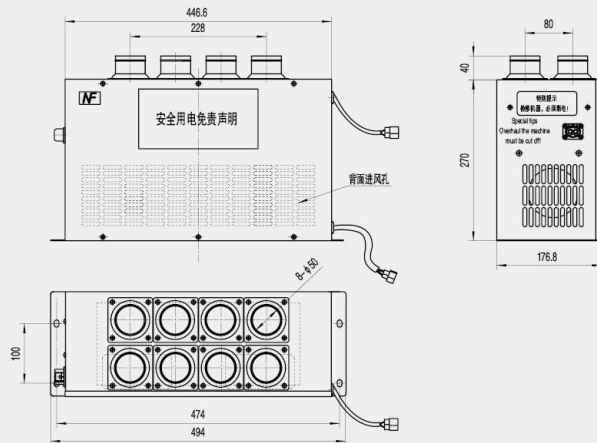
## DCS-5系列高压电除霜器

### DCS-5 series high voltage electric



型号 Type: DCS-5/14  
风机电压 FanVoltage: DC24V  
风机功率 FanPower: 170W

排风量 Airflow: 900m<sup>3</sup>/h  
PTC电压 PTCVoltage: DC537V  
PTC功率 PTCPower: 4KW  
高压插件 Highvoltageconnector: PL082X-60-2.5



型号 Type: DCS-6/05  
风机电压 FanVoltage: DC24V  
风机功率 FanPower: 170W  
排风量 Airflow: 900m<sup>3</sup>/h  
PTC电压 PTCVoltage: DC600V  
PTC功率 PTCPower: 6KW  
高压插件 Highvoltageconnector: PL082X-60-2.5

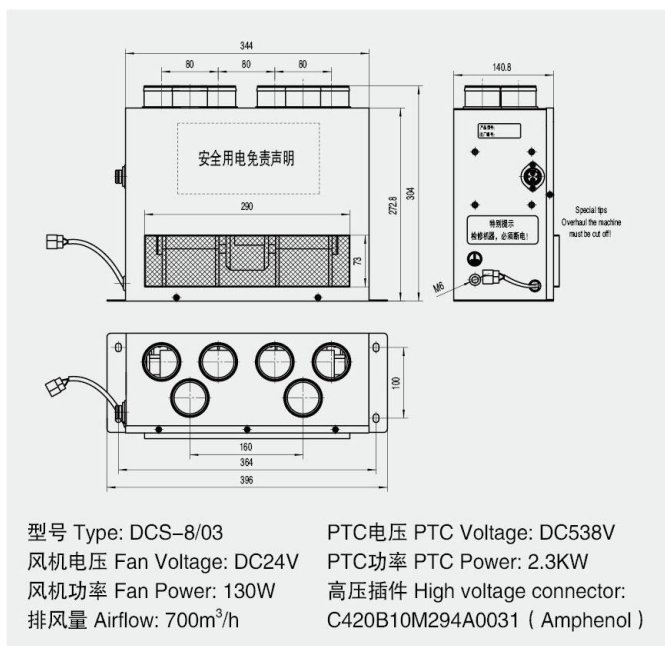
## DCS-6系列高压电除霜器

### DCS-6 series high voltage electric



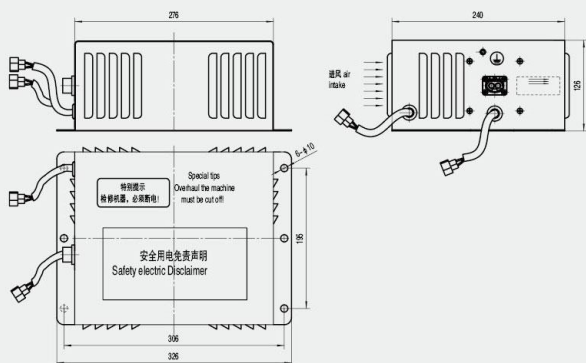
## DCS-8系列高压电除霜器

### DCS-8 series high voltage electric



## DSR-3系列高压电散热器

### DSR-3 series high voltage radiator



型号 Type: DSR-3/03  
 风机电压 Fan Voltage: DC 12V  
 风机功率 Fan Power: 30W

PTC电压 PTC Voltage: 350V  
 PTC功率 PTC Power: 1KW  
 高压插件 High voltage connector: PL082X-61-2.5



- 高压电散热器，用于纯电动车车厢采暖。
- 应用PTC发热组件，安全性更高。
- 专用出风温度超温保险装置，控制出风温度在安全范围内，保证使用安全可靠。

- High voltage radiator for electric vehicle cabm heating.
- Safer product with the application of PTC heating components.
- Special outlet air temperature sensor to control the wind temperature in the safe range, to ensure safe and reliable use.



HEBEI NANFENG AUTOMOBILE EQUIPMENT (GROUP) CO., LTD  
 BEIJING GOLDEN NANFENG INTERNATIONAL TRADING CO.,LTD

# CS 系列除霜器

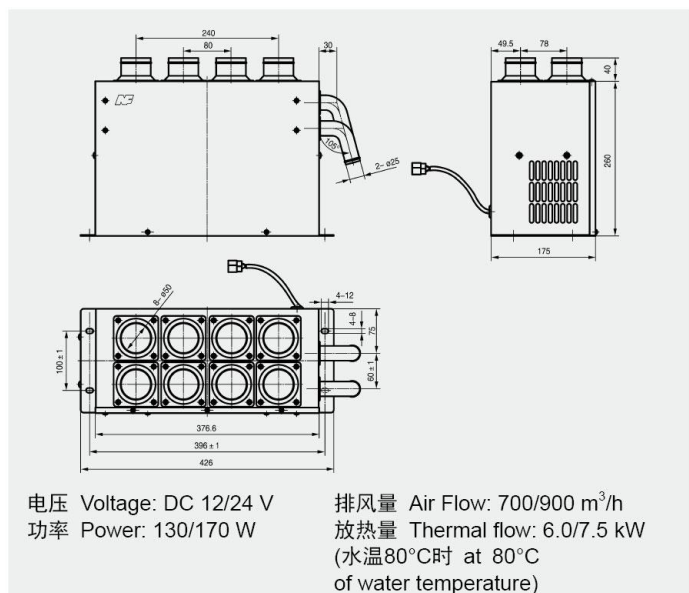
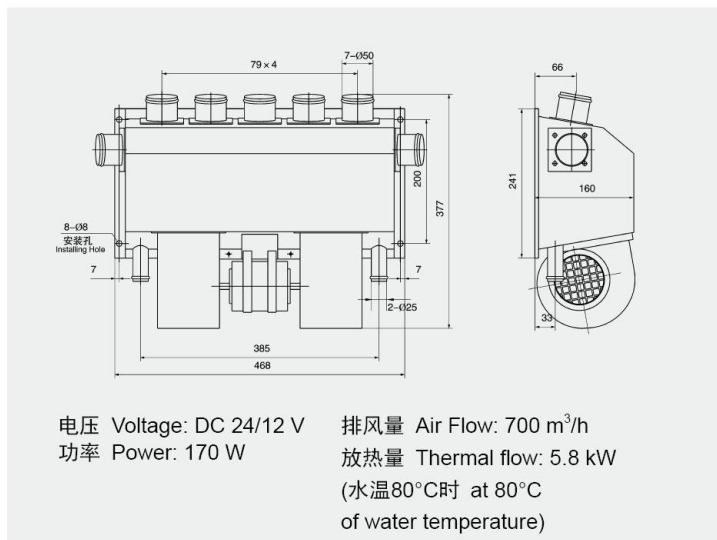
## CS Series Defroster

- 采用优质离心风机, 低噪音、低振动、效率高、寿命长、风量大。
- 采用铜管铝片式热交换器, 耐压高、抗氧化、抗腐蚀、安全性好
- 采用优质特种材料外壳, 美观大方, 防腐性能好。

- Due to the use of high-quality centrifugal blower, it features low noise, low vibration, high efficiency, long life and generates high air volume.
- Due to the use of copper pipe and aluminum sheet, the heat exchanger is characterized by pressure resistance, oxidation and corrosion resistance, high level security.
- Thanks to the high-quality special steel shell it offers good anticorrosive properties and the good design enhances the appeal of its high aesthetic quality.

## CS-7 除霜器

### CS-7 Defroster



## CS-7D 除霜器

### CS-7D Defroster

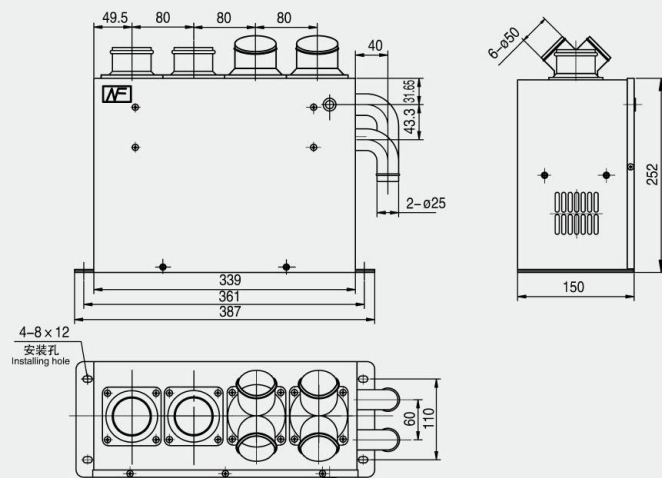


CS-7, CS-7D: 外型尺寸较大, 适用于仪表台内空间较大、除霜效果要求较高的大中型车。

CS-7, CS-7D: The dimensions are large, so it is suitable for the wide space of the dashboard gauge area of large and mid-size vehicles with high defrosting requirements.

## CS-9 除霜器

### CS-9 Defroster



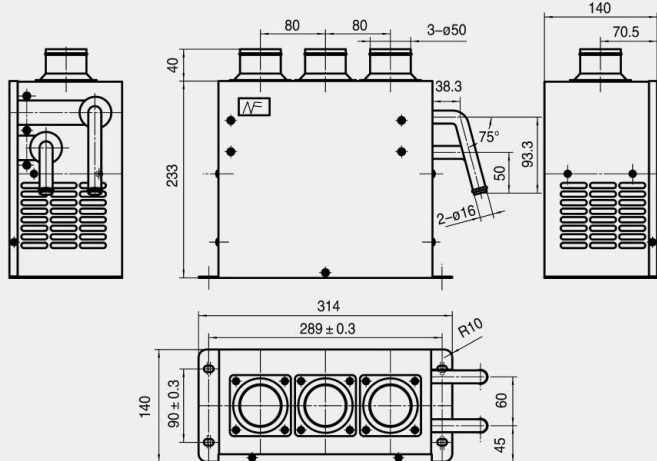
- CS-9外型尺寸适中, 适用于仪表台内空间适中的中小型车。
- CS-9: Moderate-size dimensions, suitable for the moderate space of the dashboard gauge area of mid-size and mini buses.

电压 Voltage: DC 24 V  
功率 Power: 130 W  
质量 Weight: 6.5 kg

排风量 Air Flow: 500 m<sup>3</sup>/h  
放热量 Thermal flow: 4.4 kW  
(水温80°C时 at 80°C of water temperature)

## CS-11 除霜器

### CS-11 Defroster



电压 Voltage: DC 24/12 V  
功率 Power: 80 W

排风量 Air Flow: 360 m<sup>3</sup>/h  
放热量 Thermal flow: 2.5 kW  
(水温80°C时 at 80°C of water temperature)



- CS-11外型尺寸小, 适用于仪表台内空间狭小的小型车。
- CS-11: Small-size dimensions, suitable in the limited space of the dashboard gauge of mini buses.



HEBEI NANFENG AUTOMOBILE EQUIPMENT (GROUP) CO., LTD  
BEIJING GOLDEN NANFENG INTERNATIONAL TRADING CO.,LTD

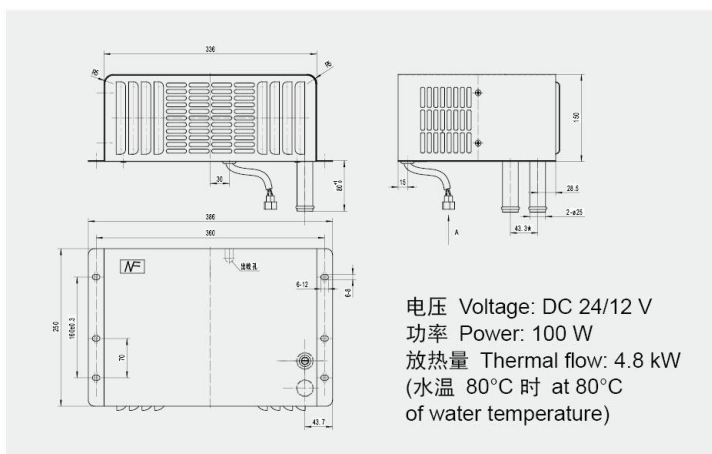
# SR 系列强制散热器

## SR Series Ventilated Convector

- 采用优质离心风机, 低噪音、低振动、风量大、效率高、长寿命。
- 采用铜管铝片式热交换器, 耐压高、抗氧化、抗腐蚀、安全性好
- Using the high-quality centrifugal air blower, its features include low noise and minimal vibration. Operating with large wind volume, it is highly efficient and boasts a long service life.
- Working with a heat exchanger equipped with copper pipes and aluminum sheeting, it is pressure-resistant, oxidation and corrosion-resistant, very secure.

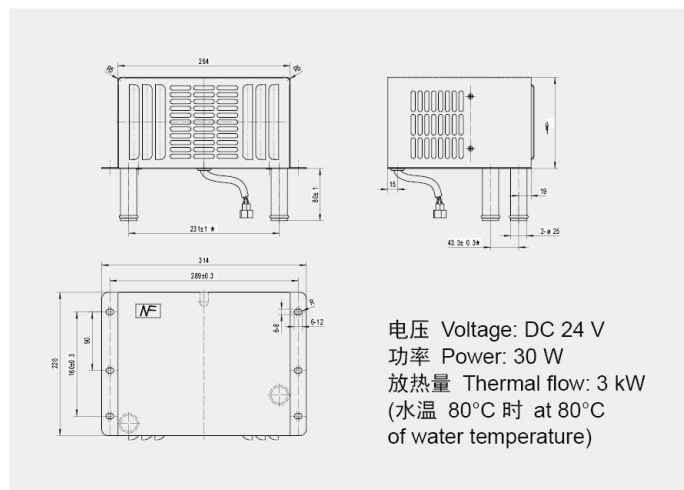
### SR-4X/09 强制散热器

#### SR-4X/09 Ventilated Convector



SR-4 具有多种出水方式和安装方式, 适用各种车型。

SR-4: Features a variety of different water outlets and installation methods, and is, thus, suitable for all types of vehicles.



SR-5 结构紧凑、尺寸适中, 适用各种车型。

SR-5 Compact structure and moderate size make this convector suitable for all types of vehicles.

### SR-5 强制散热器

#### SR-5 Ventilated Convector

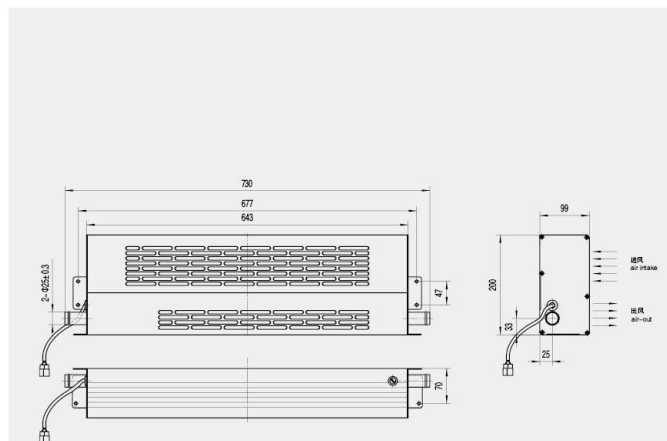


## SR-74系列铝型材散热器

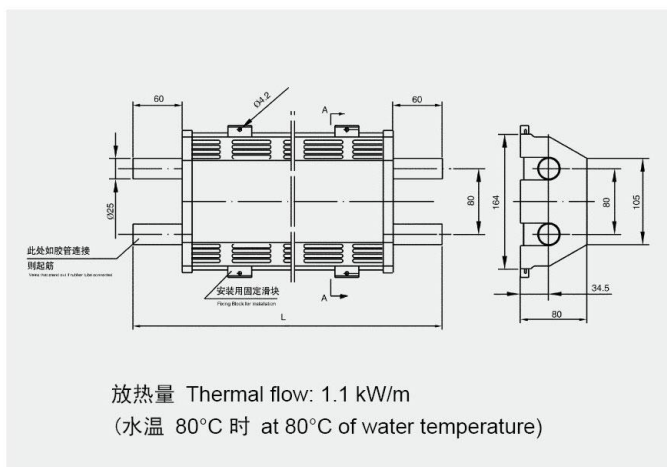
## SR-74 series aluminum radiator



- 铝合金外壳，外形美观，安装方便。
  - 采用优质贯流风机，出风均匀，噪音低、效率高。
  - 同侧进出风式设计，避免灰尘堵塞进风口，免维护。
  - 具有多种出水方式，适用于各种车型。
- 
- Aluminum alloy shell, beautiful appearance, convenient installation.
  - The use of high-quality cross flow fan, a even outlet wind, low noise, high efficiency.
  - The same side of wind inlet and outlet to avoid the dust plug into the air, maintenance free.
  - With diffeent water pipe designs, applicable to a variety of vehicle models.



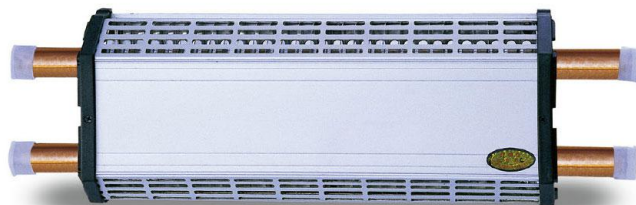
型号 Type: SR-74A      排风量 Airflow: 450m<sup>3</sup>/h  
电压 Voltage: DC24V    放热量 Thermalflow: 4kW  
功率 Power: 20W        ( 水温 Watertemperature 80℃ )



- 在长度 4.500 mm 以内的尺寸，可根据用户安装要求订做。
- Lengths below 4.500 mm may be customized according to the user's requirements.

## SRP-2 自然散热片

## SRP-2 Static Convector



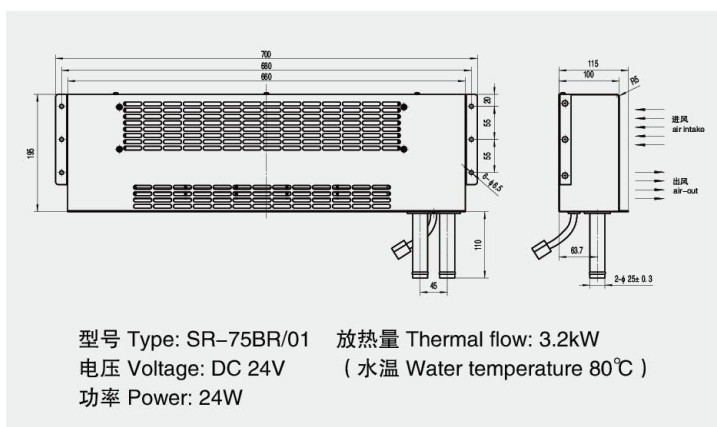
- 采用铝合金外罩, 美观大方。
  - 不消耗电能, 无噪音。
  - 选用优质散热材料, 合理的结构, 保证了其良好的散热性能。
  - 可根据用户要求确定长度, 适用于各种车型。
- 
- Uses an aluminum alloy shell, has a well-designed, elegant appearance.
  - Does not consume electrical energy and produces no noise.
  - The high-quality material and the sensibly designed structure ensure its excellent radiating performance.
  - The length may be customized to the user's requirements, and it is suitable for all vehicle types.

## SR-75系列同侧进出风散热器

SR-75 series of the same side out of the wind heat sink



- 采用优质贯流风机，出风均匀，噪音低、效率高。
- 采用铜管铝片式热交换器，耐压高、抗氧化、抗腐蚀、安全性好。
- 同侧进出风式设计，避免灰尘堵塞进风口，免维护。
- 具有多种出水方式，适用于各种车型。

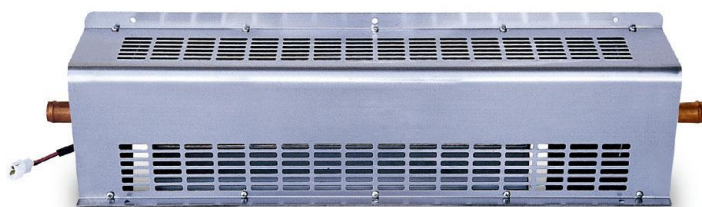


- The use of high-quality cross flow fan, a even outlet wind, low noise, high efficiency.
- The use of copper tube and aluminum plate heat exchanger, endure of high pressure, oxidation, corrosion, good safety performance.
- The same side of wind inlet and outlet to avoid the dust plug into the air, maintenance free.
- With different water pipe designs, applicable to a variety of vehicle models.

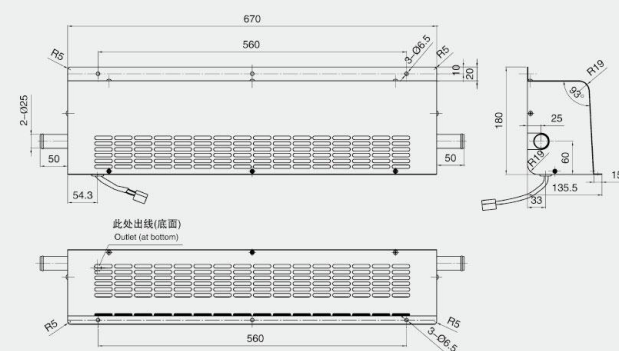
## SR-13A 强制散热器

## SR-13A Ventilated Convectors

- 采用优质有刷贯流风机, 低噪音、低振动、效率高、长寿命。
- 采用铜管铝片式热交换器, 耐压高、抗氧化、抗腐蚀、安全性好
- 采用不锈钢外壳, 美观大方, 适用于中高档客车。
- 具有多种出水方式, 适用于各种车型。



- This heater is constructed with a high-quality brush blower motor and its features include low noise and minimal vibration along with high efficiency and long life.
- Working with a heat exchanger equipped with copper pipes and aluminum sheeting, it is pressure-resistant, oxidation and corrosion-resistant, high security.
- The stainless steel exterior shell, its appealing design projects good taste, making it suitable for upscale passenger cars.
- Variety of water outlets, suitable for all kinds of vehicles.



电压 Voltage: DC 24/12 V      放热量 Thermal flow: 3.8 kW  
功率 Power: 25 W      (水温 80°C 时 at 80°C of water temperature)

# 加热器配件

Spare parts for Webasto and Eberspacher



burner



glow plug screen



blower motor



blower motor for Webasto



glow plug



glow plug



burner screen



burner gasket



motor for Webasto



motor for Eberspacher



oil filter



burner



fuel pump



fuel pump





**HEBEI NANFENG AUTOMOBILE EQUIPMENT (GROUP) CO., LTD**  
**BEIJING GOLDEN NANFENG INTERNATIONAL TRADING CO.,LTD**

---

Company Add: Room15C,SunbetterDiamond No.52A,East Third  
Ring South Road, ChaoYang District, Beijing, 100022 P.R.China

Tel: +86-10 59711608

Fax: +86-10 59711619

Web: [www.auto-parkingheater.com](http://www.auto-parkingheater.com)

E-mail: [nf.fu@jinnanfeng.cn](mailto:nf.fu@jinnanfeng.cn)